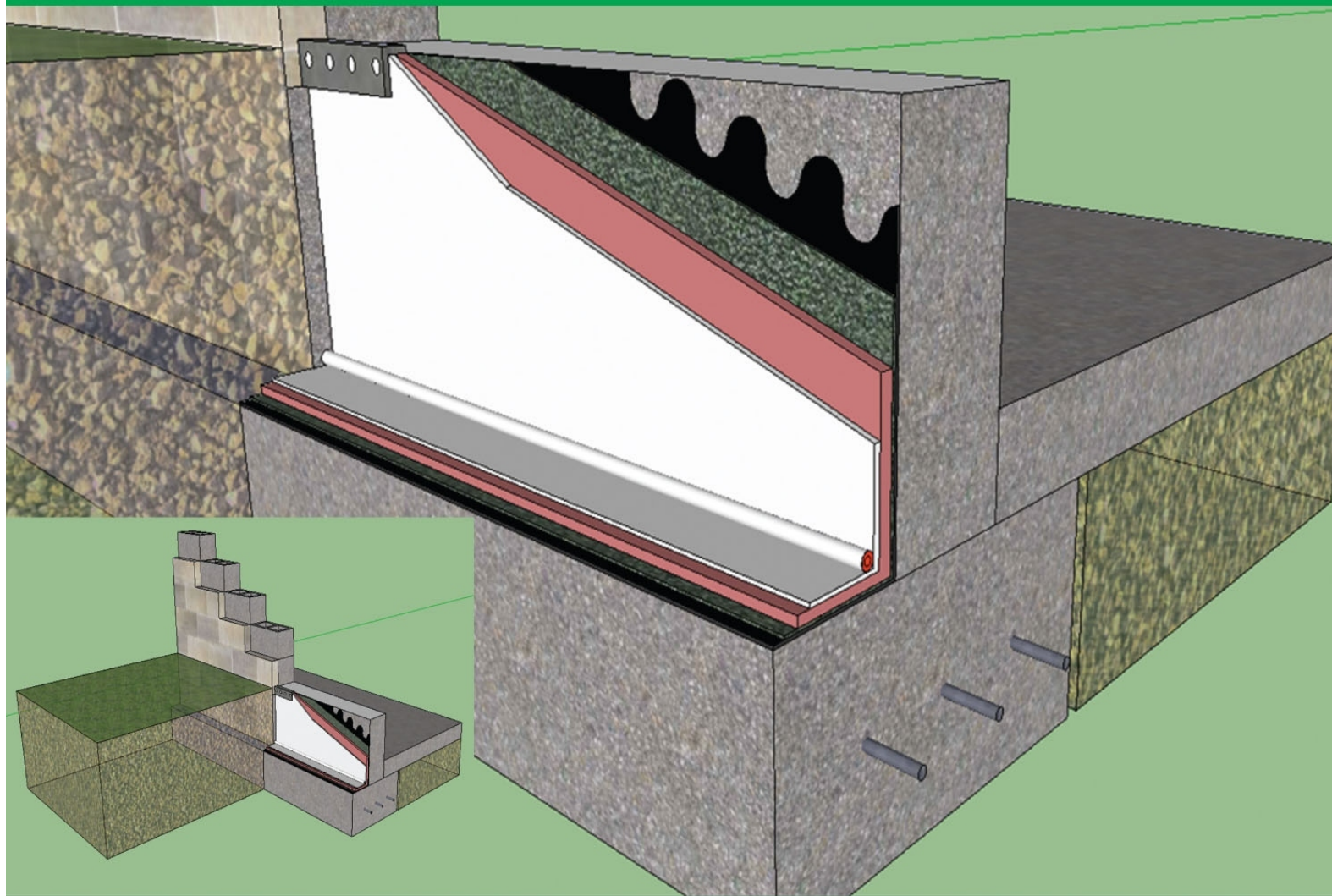




THE SOLUTION

FLEXCOAT

WATERPROOFING PRODUCTS



WATERPROOFING FOR WALLS



ROMTECH
CONSTRUCTION, INC.



MEMBER



MEMBER



PSVARE MEMBER



PCAB ACCREDITED

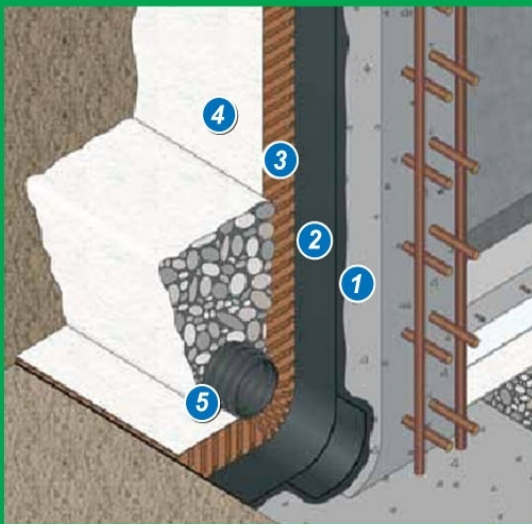
WATERPROOFING & PROTECTION ON WALLS SYSTEM

ROMTECH solutions for waterproofing, protection and drainage of underground walls of residential buildings and of civil works.

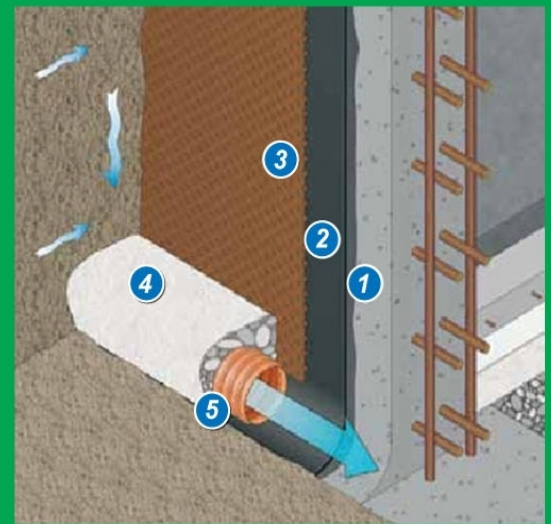
ADVANTAGES

- It gives a continuous drainage, avoiding the appearance of hydrostatic pressure against the walls and avoiding a direct contact between moisture and the wall.
- The waterproofing is provided by bituminous membranes torched on or self adhesive against a previously primed support.
- Long lasting durability of the building / structure against moisture and external aggressions.

SOLUTIONS



- 1 Primer
- 2 Waterproofing
- 3 Drain and protection
- 4 Filter cloth/Geo textiles
- 5 Drainage pipe or perforated pipe



- 1 Primer
- 2 Waterproofing
- 3 Drain and protection
- 4 Filter cloth/Geo textiles
- 5 Drainage pipe or perforated pipe

WATERPROOFING MATERIAL

Flex Indextene - Self Adhesive membrane for walls

Flextorch NOVA P – Torch on mineral membrane for walls

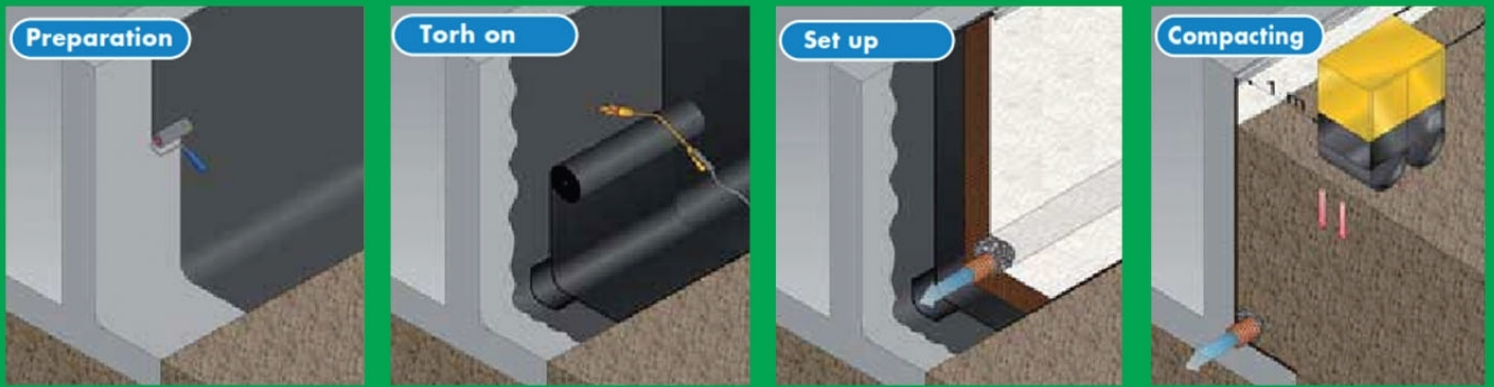
ROM-PH30 Polyurea – Fast set Sprayed Elastomer

**refer individual brochure for technical specification

DRAINAGE AND PROTECTION

PRODUCT NAME		DESCRIPTION
Ⓒ	DANODREN H15 PLUS	High-density polyethylene (HDPE) nodular sheet for walls and floor's drainage, and waterproofing mechanical protection.
Ⓒ	DANODREN H25 PLUS	
Ⓒ	DANODREN H15	High-density polyethylene (HDPE) nodular sheet for waterproofing mechanical protection.
Ⓒ	DANODREN H25	

WATERPROOFING & PROTECTION ON WALLS SYSTEM



- 1 Surface Preparation** – the surface of the wall must be resistant enough, even, plain, clean and dry. Singular points must also be prepared before the installation of the membrane. Previous to the waterproofing of the wall a bituminous primer must be applied. Applying surface must be plain, dry and clean out of dust and grease.
- 2 Waterproofing installation** – membrane is applied on vertical position.
(refer individual brochure for waterproofing detail.)
- 3 PROTECTION and DRAINAGE** – DAN O DREN H PLUS rolls must be applied with the geotextil against. The ground, setting the fixing every 50 c max . Overlaps 10-12 cm. Adhesive fixings can be also be used. In order to ensure the drainaging membrane, the metallic profile must be mechanically fixed to the wall.



	DAN o DREN H15 Plus	DAN o DREN H15	DAN o FELT PY 500	DAN o FELT PY 300
Length	20m	20m	70 m	100 m
Width	2.1m	2.1m	2.2m / 4.4 m	2.2m / 4.4 m
Roll Surface	42m ²	42m ²	154 m ² / 308m ²	154 m ² / 308m ²
Technical Data				
Compressive resistance	180±20%kN/m ²	180±20%kN/m ²		
Tensile Strength, approx	>450 N/60mm	>450 N/60mm		
Tear Strength, approx	>25%	>25%		
Modules of elasticity	1500N/mm ²	1500N/mm ²		
Drainage capacity	5 l/s.m	5 l/s.m		
Puncture Resistance	2.5, -0.5kN			
Tensile strength	15.0, -2.0kN/m			
Elongation at break	100±20%			
Water permeability	0.0614, -0.00921 m/s			

*** refer to individual brochure for complete technical data

LIST OF PRODUCT AND SERVICES

Fast Set Sprayed Elastomer Polyurea

Polyurethane Waterproofing System

Structural Strengthening System

Retaining Wall Waterproofing System

Roof Garden System

Flextorch Waterproofing membrane

Flextorch Mineral Design Membrane

Cementitious Type Waterproofing System

Flexible Acrylic Waterproofing System

Sprayed Polyurethane Foam System

Structural Epoxy for Concrete Crack Repair

Special Coating Formulation

Protective and Reflective Paint

Graco Equipment

OTHERS



ROMTECH CONSTRUCTION, INC.

378 Edang St., Malibay District, Pasay City, Philippines

Telephone Nos. (632) 851-8329 / 851-8343 / 851-8344

Fax No. 853-1492 Email: romtech@romtechconstruction.com.ph

Website: www.romtechconstruction.com.ph