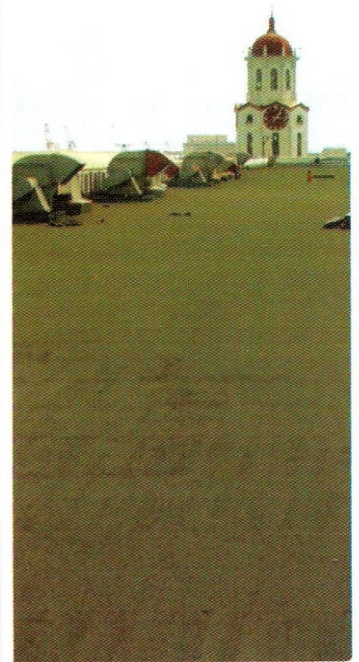


THE SOLUTION

FLEXCOAT

FLEXTORCH

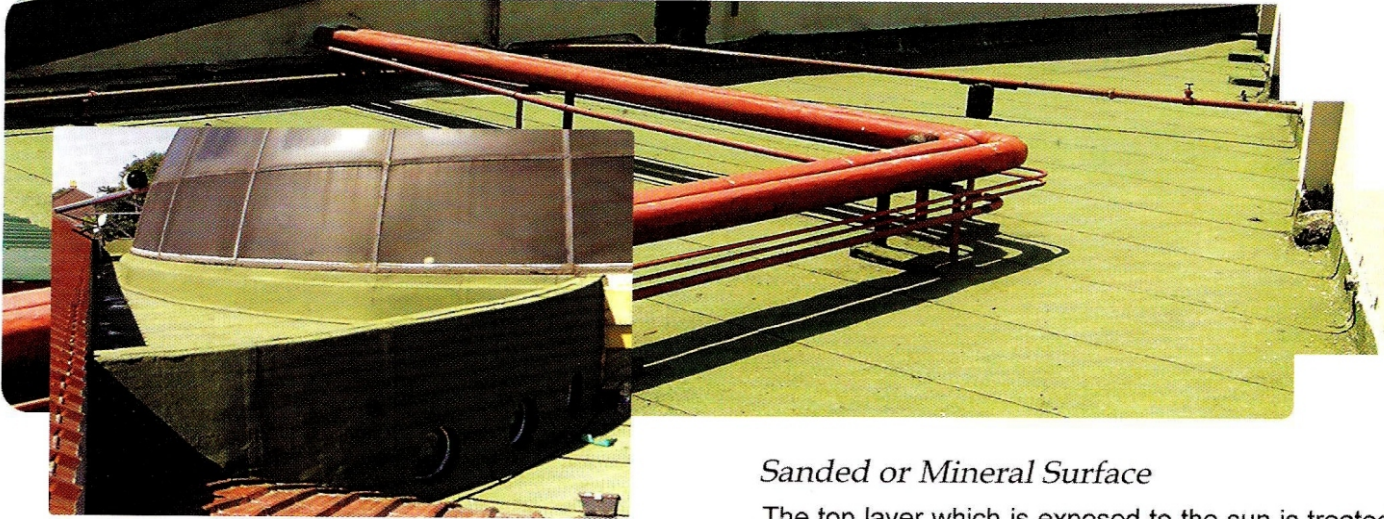
Mineral Argo P



Mineral Green/Mineral Red

Polyester Reinforced Waterproofing Membrane
For the protection, repair and restoration
of all types of roofs, gutter and structures

FLEXTORCH

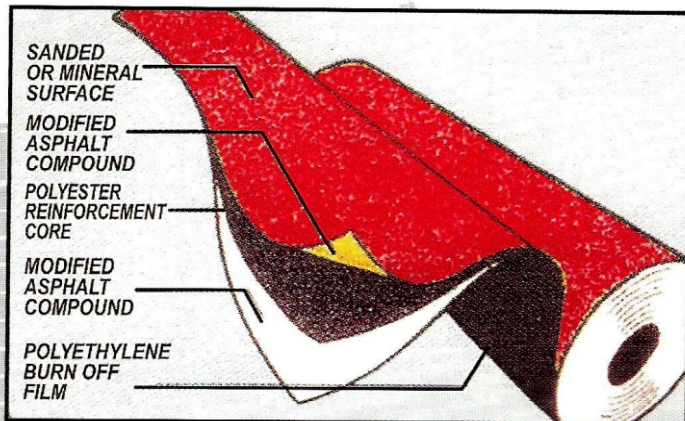


Description

Flextorch is a prefabricated roofing membrane manufactured under the most stringent quality control specifications.

Typical Application:

- Reroof and New Construction Roof for Commercial and Residential
- Foundation Waterproofing
- Dome Shaped Roofs
- Bridge and viaducts
- Under Floor Waterproofing
- Rooftop Gardens
- Patio Decks



Sanded or Mineral Surface

The top layer which is exposed to the sun is treated with fine sand for the sanded-finish and with small coloured granules for the mineral-finish. These sand or granules are factory applied during production, thus assuring minimal loss throughout the life of the roof. The treated surface offers:

- Excellent protection from U.V.
- Available in green, black, brown, buff, red and tan coloured granules.
- Eliminates need for coating or covering the top with concrete/tiles, thus reducing roof load and extra expense.

Modified Asphalt

The asphalt is mixed with highly compatible modifiers to provide the membrane with better aging characteristics and higher resistance to cold and hot temperatures. Flextorch is flexible. When compared to regular asphalt, one can readily realize the benefits of the membrane.

Polyester Core

The core of Flextorch is reinforced with a non woven polyester mat which stretches up to 30%. Similar glass felts offer a maximum of 2 % elasticity. This feature allows the membrane to accommodate thermal shocks and excessive roof movements.

Burn Off Film

A thin burn off film is factory applied during production. This film acts as a heat gauging device. The applicator can watch the heat reaction of the film and therefore visually gauge the application temperature.

Simplier and Easier

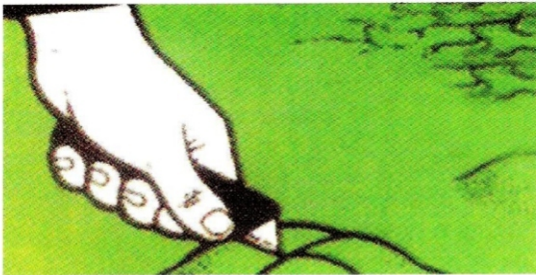
Applications

Features

- Quick, simple, easy and inexpensive application
- Only one layer is required, thus reducing roof load and installation cost
- Can easily be maintained and repaired
- Can be exposed directly to sun thus eliminating need for protective coating, concrete or tiles
- No kettle or hot asphalt required
- No height restriction on application

Step 1:

Clean surface and prime with Flex Primer



Step 2:

Begin from low point of roof to high. Application should begin in the valleys and work up hill to avoid backwater laps.



Step 3:

Unroll the membrane fully and allow side laps, reroll halfway and begin torching. Allow 4" lap joints along the roll edges and 5" on roll ends and transverse joints.



Step 4:

Pass the torch flame from side to side until the burn off film begins to fully melt. Move the roll at this time. Do not over heat.



Step 5:

The sanded or granulated surface at the roll edges or end laps should be scrapped off to provide for a smooth surface.



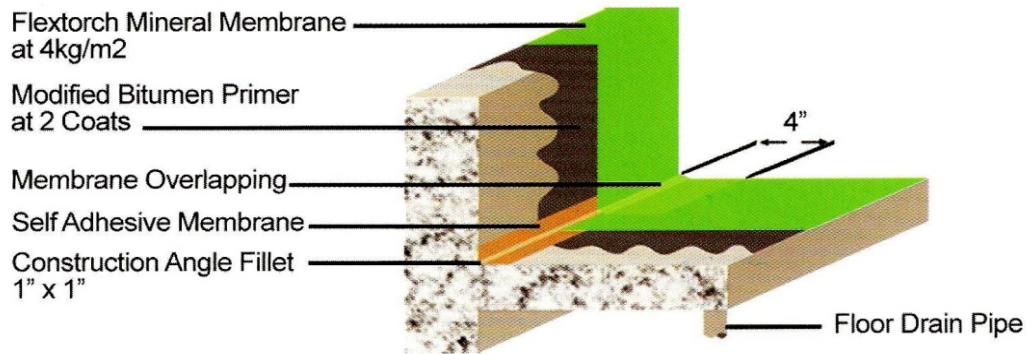
Step 6:

Recheck the seams to assure a minimal of 3mm. bitumen outflow for water tight integrity.



APPLICATION OF FLEXTORCH MINERAL GREEN MEMBRANE

(Exposed Waterproofing Membrane for Roofdeck, Concrete Gutter, Parapet Walls and Slooping Roofs)



ISOMETRIC DETAIL

Technical Data

Reinforcing (Nonwoven Polyser)	180 gm/m ²	Standard
Softening Point	143°C	ASTM D 36-76
Heat Stability	120°C	UNI8202/18
Cold Flexibility	-5°C	UNI 8202/15
Water Absorption	< 1%	ASTM D 570:88
Water Vapour Transmission	13.30 g/m ²	ASTM E 96:94
Tensile Strength	24 hours > 5 N/mm ²	ASTM D 412:92
Elongation at Break	> 46%	ASTM 0412:92
Tear Resistance	140N	ASTM D 36-76
Modified Asphalt	APP and SBS	
Surface Finish	Sanded or Mineral	
Sanded Surface (Thickness)	3mm, 4mm	
Mineral Surface (Weight)	4.5 kg/m ² , 5 kg/m ²	
Roll Size	1m width x 10m length	
Colour Available	Green, Grey, Red, Black (on indent basis)	